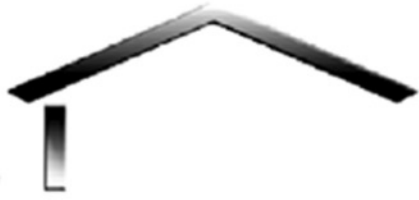
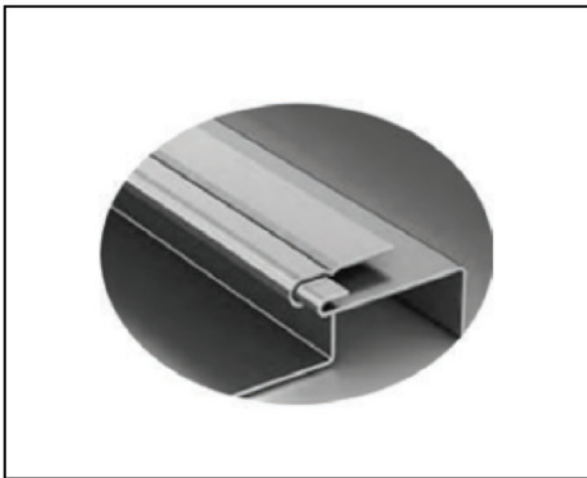


KILLIAN'S CUSTOM METAL ROOFING & PANEL LLC

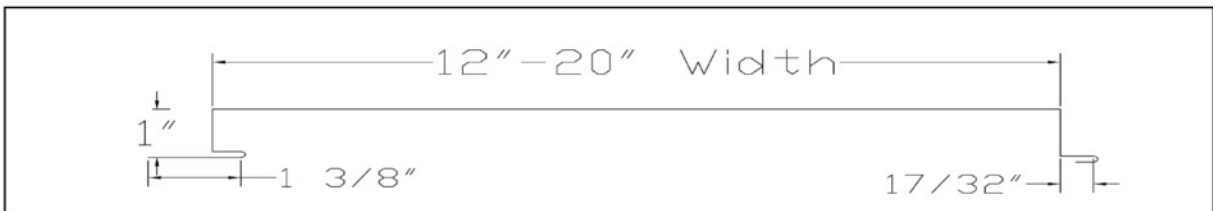
515-244-0770



FP1 Flush/Soffit/Wall Panel



- 16" Coverage in 26 ga.
- 12", 16", 18" Coverage in 24 ga.
- 1" Inter-Locking Rib
- Available in Smooth, Grooved, or Perforated
- 32 PVDF Stock Colors + Galvalume in 24ga.
- 19 WXL and 5 PVDF Colors + Galvalume in 26ga.



FP1 panel is a prefinished and maintenance free panel for open spans. FP1 panel can be used for various applications such as soffit, liner, fascia, and even ceilings. It is available in 32 PVDF colors in 24 ga, and comes in multiple configurations such as smooth, grooved, or perforated. It also can be configured as flush or with a 3" reveal.